



INSTALLATION GUIDE
Part Number GRM123041STR
Last Updated 08/20/2024

GRIMMSPEED TRANSMISSION MOUNT INSTALL GUIDE



FITMENTS:

- 2004-21 Subaru STI (6MT)
- 2002-14 Subaru WRX (5MT)*
- 2015-24 Subaru WRX (6MT)*
- 2004-08 Subaru Forester (5MT)*
- 2005-09 Subaru Legacy GT (5MT/6MT)*
- 2005-09 Subaru Outback XT (5MT)*
- 1993-22 Subaru Impreza (5MT)*

**Not compatible with 4/5 Speed Automatic or CVT Models*

THINGS TO NOTE:

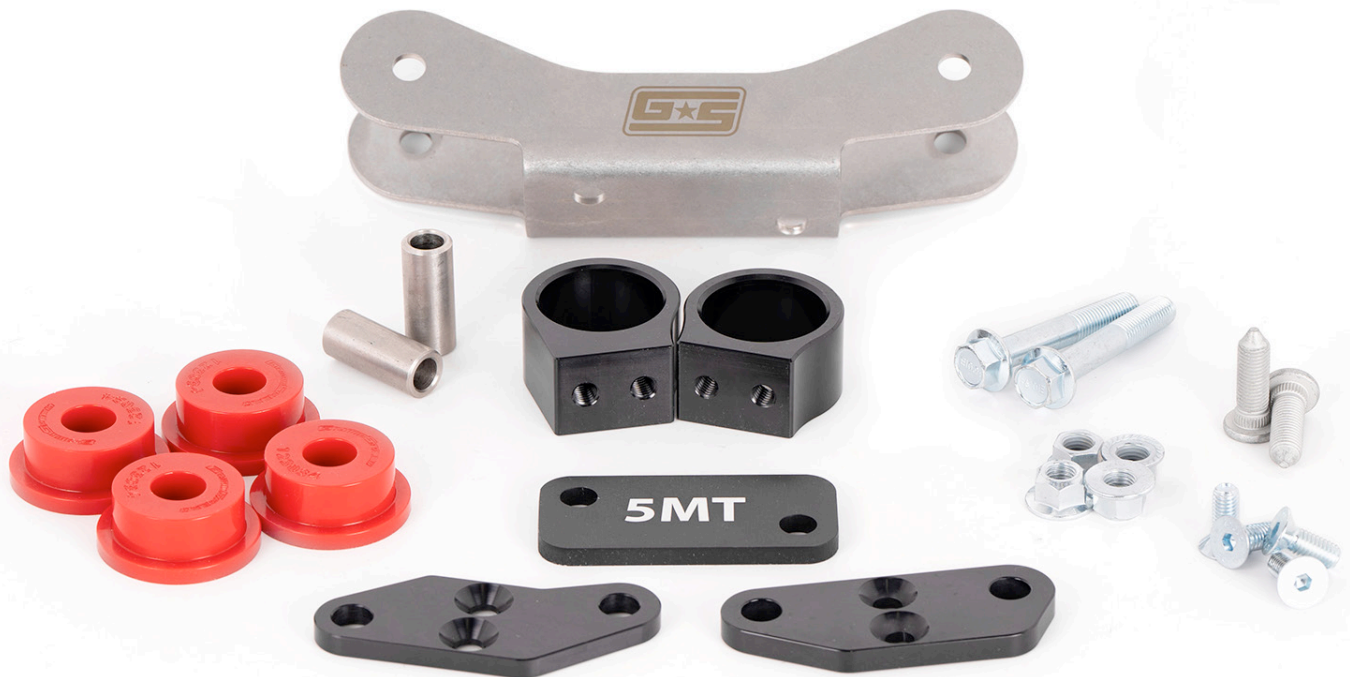
- This is a fairly basic installation and should only take 20-30 minutes to complete
- Be sure to follow recommended torque specs during the install.
- All of the bolts we will be touching for this install are identical, so you don't need to worry about keeping them sorted neatly.
- No ECU tuning or re-calibration is required after installation.

PRODUCT DISCLAIMER:

United States 48 State Compliant:
California/New York Residents please see Prop 65.

This is a Race Only product that is to be used solely for competition, it cannot be used on vehicles that are operated on public streets, roads or highways. Its use is limited to closed-course and open-course racing that is formally sanctioned by a recognized racing organization. Any other use including recreational use could be in violation of local, state and federal laws.

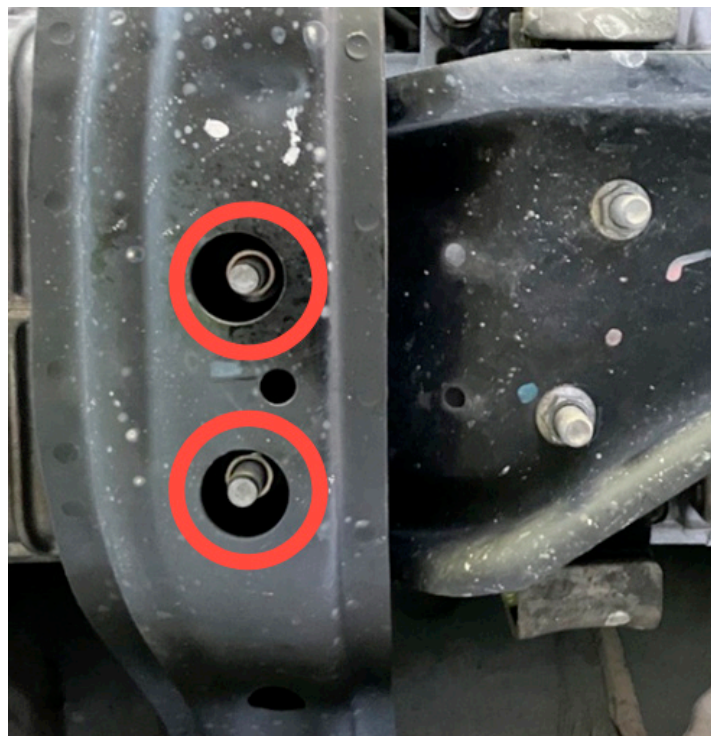
GrimmSpeed is not responsible for any vehicle damage or personal injury that may occur due to an installation error, product misuse, or removal of GrimmSpeed products. GrimmSpeed highly suggests that a trained professional conduct the installation on all products. GrimmSpeed is not responsible for damaged products due to incorrect installation.



Item	Quantity	Part Number	Description
1	1	GS-123031	Transmission Mount Bracket
2	2	GS-123046	Press-In Stud - M10 x 1.25
3	1	GS-123032-A	Transmission Mount 1 Plate
4	1	GS-123032-B	Transmission Mount 1 Boss
5	1	GS-123033-A	Transmission Mount 2 Plate
6	1	GS-123033-B	Transmission Mount 2 Boss
7	4	GS-123034.1	Transmission Mount Bushing 75A
8	2	GS-123035	Transmission Mount Sleeve
9	1	GS-123036	Transmission Mount 5MT Adapter
10	2	B02144	JIS Flange Bolt - M10 x 1.25 x 60 - Zinc Plated Steel
11	4	B00258	Flat Head Cap Screw - M8 x 1.25 x 20 - Zinc Plated Steel
12	2	N23007	JIS Flange Nut - M10 x 1.25 - Zinc Plated Steel
13	2	MCM-90426A170	Distorted-Thread Flange Locknut - M10 x 1.25 - Steel

STEP 1 - With the vehicle lifted, support the transmission under the transmission mount with a floor jack or pole jack so we can slowly lower the transmission later in the install. Use a block of wood to prevent damage.

Using a deep 14mm socket, remove the front cross member bolts.



STEP 2 - Remove the two 17 mm bolts holding the front cross member to the body. You will then be able to slide the cross member over the exhaust and remove it. Note the rubber isolator between the cross member and transmission bracket.

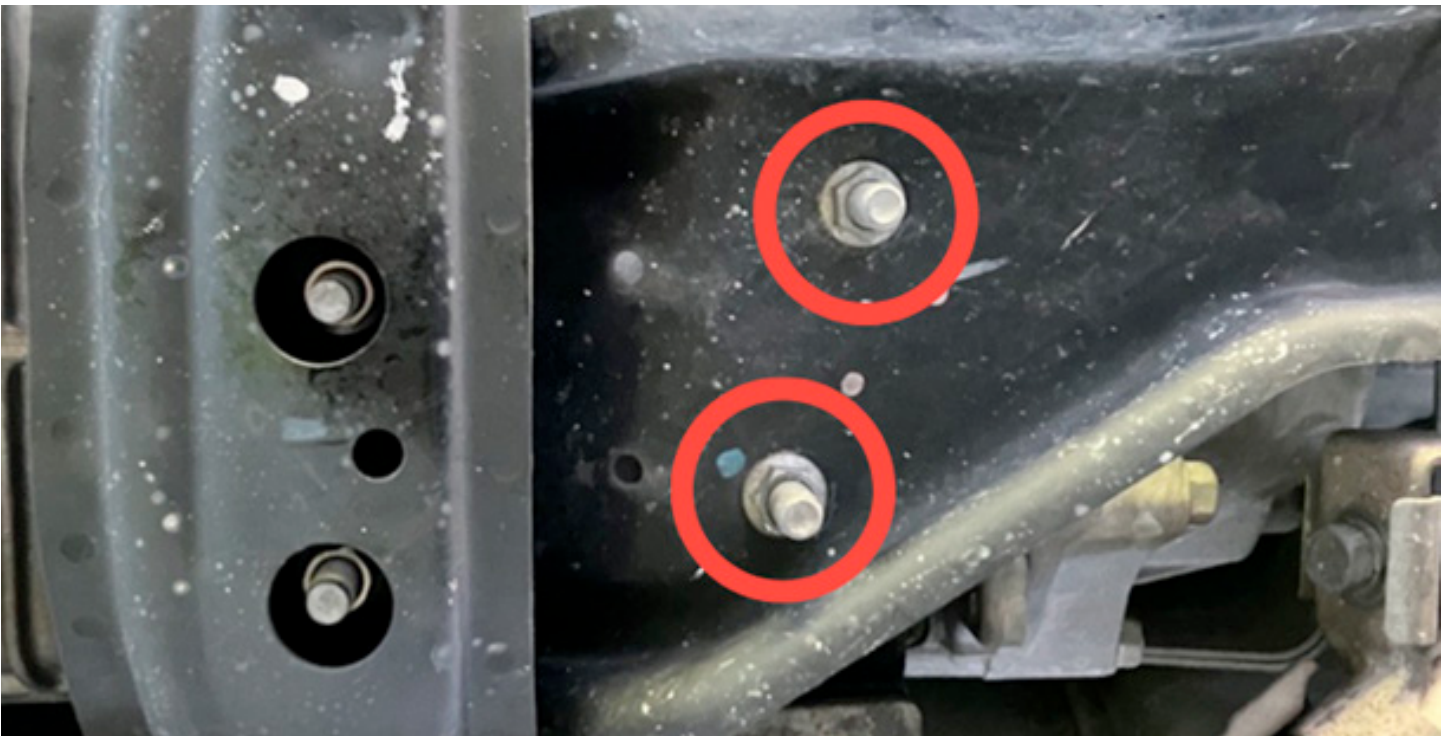


STEP 3 - Using a 14 mm socket remove the two bolts holding the transmission mount to the rear cross member. Note the rubber isolator between the hardware bracket and the transmission cradle, it may fall off the cradle.

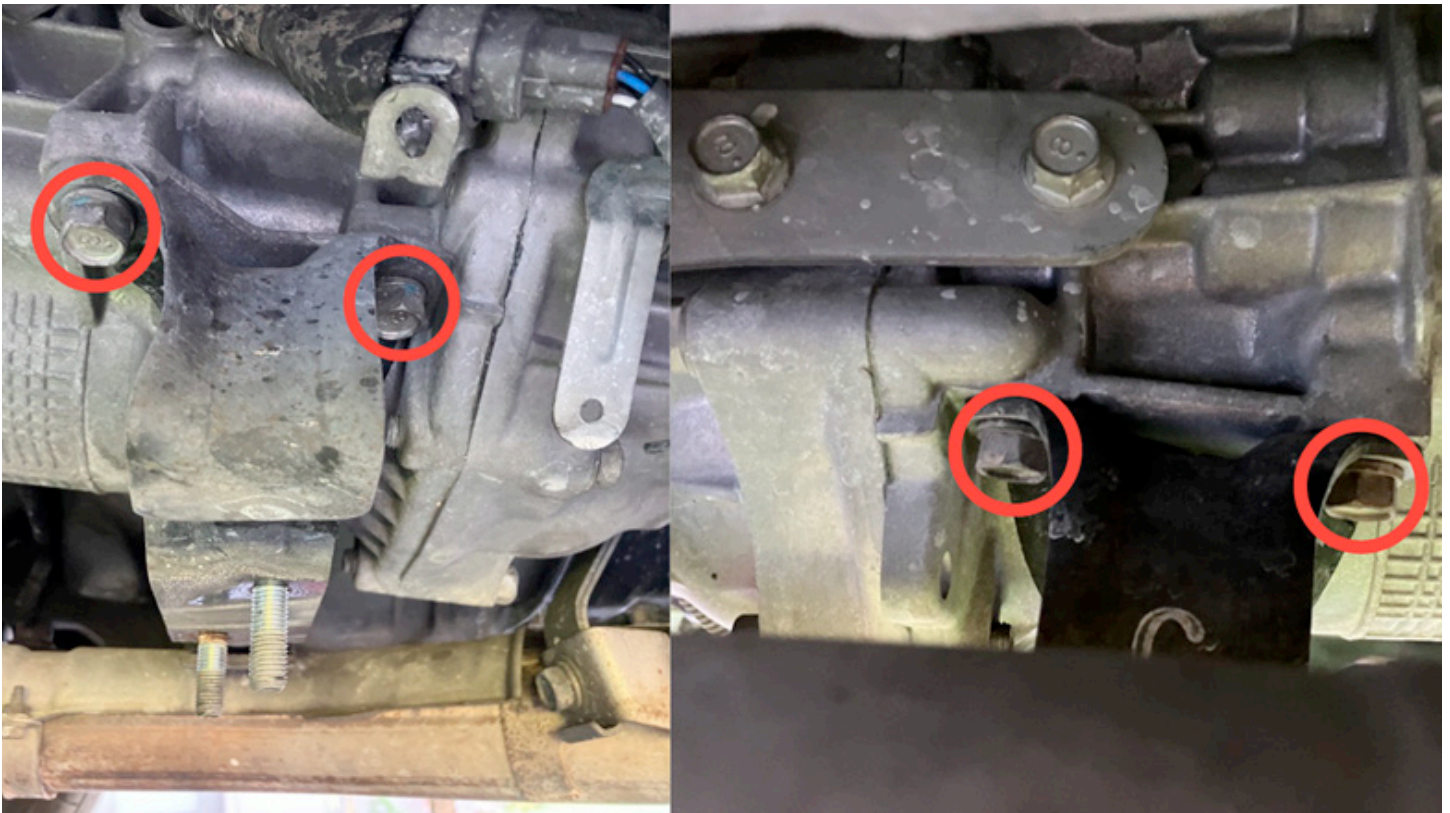


STEP 4 - You can now slowly lower the transmission; lower it to the point where it will hang on its own.

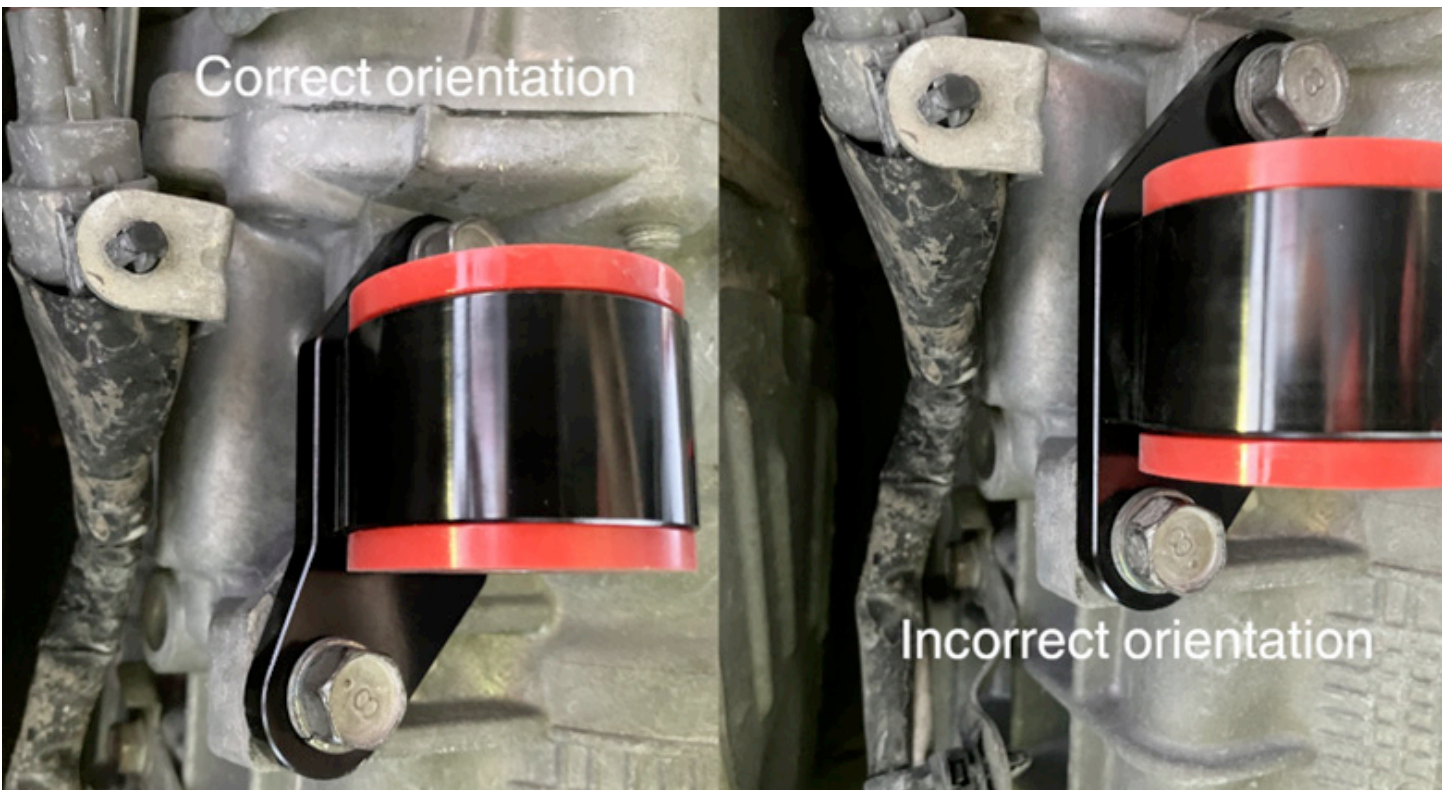
Now that the transmission bracket is free of the cross members, you can remove the two transmission mount's nuts. These are 14mm. Use a free hand to hold onto the bracket. It will fall once these final nuts are removed. These nuts will not be reused.



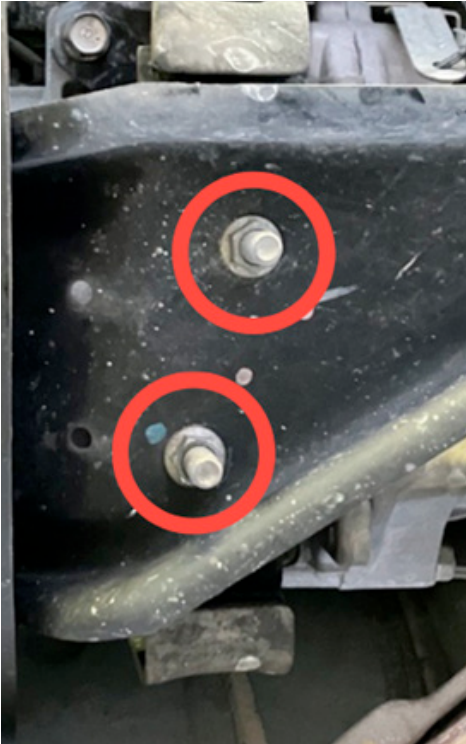
STEP 5 - With the transmission bracket out of the way, remove the four 14mm bolts holding the transmission mount to the transmission.



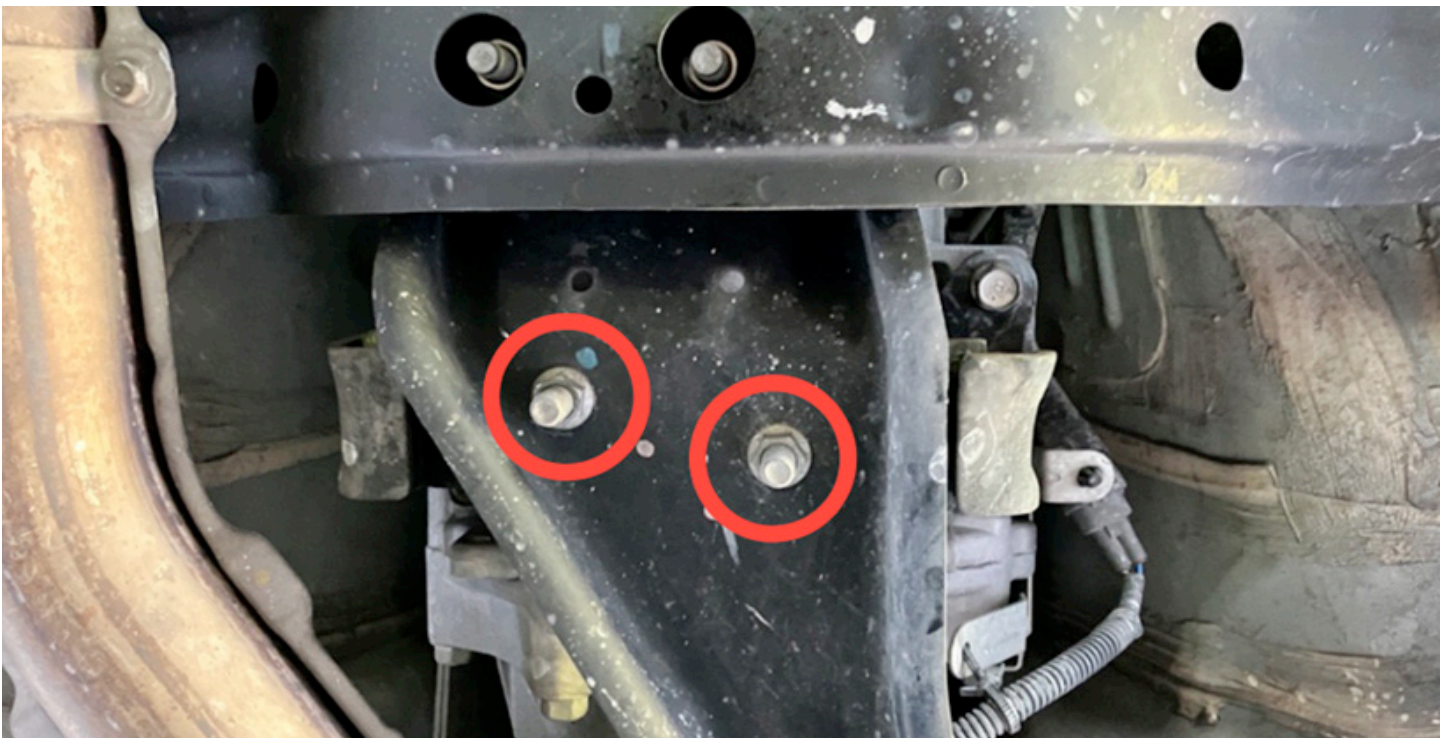
STEP 6 - The two transmission mount bosses need to be removed from the GrimmSpeed mount bracket and installed first. The passenger side boss will only fit in one orientation, but it is possible to mount the driver's side boss backwards. Refer to the image below for the proper orientation. These bolts are 14mm bolts, torque these bolts to 25.8 ft/lbs.



STEP 7 - Install the transmission mount bracket to the bosses. The bolts will only fit from front to rear of the car. The transmission mount bracket needs to be oriented so that the stud on the passenger's side is set forward. Using a 15mm box wrench and 15mm socket, torque to 41 lb-ft. If installing on a 5 speed transmission you will need to use the Transmission Mount 5MT adapter between the mount bracket and the transmission bracket.



STEP 8 - Reinstall the transmission cradle, using the supplied 15mm nuts. Torque to 25.8 ft/lbs.



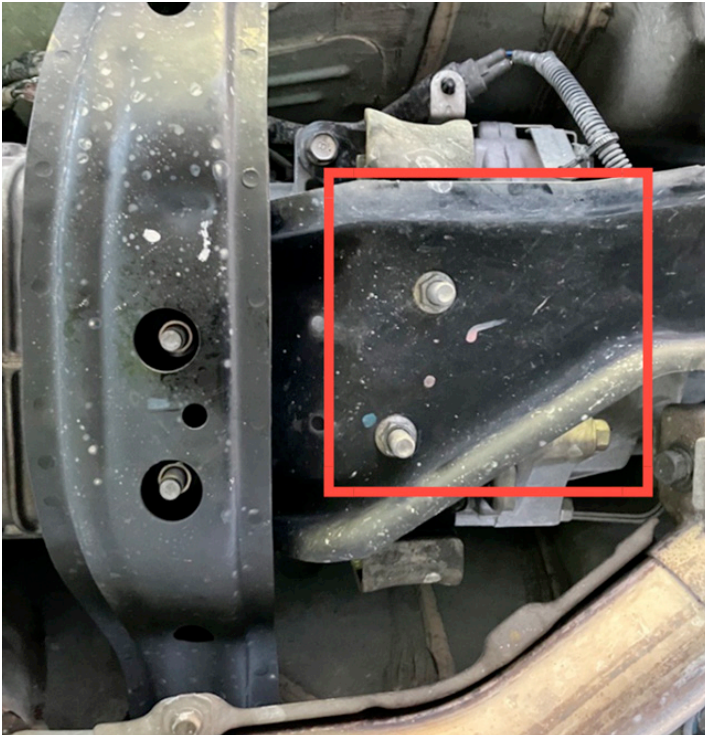
STEP 9 - Using a floor jack or pole jack, raise the transmission so that the rear cross member bolts can be reinstalled. Torque to 51.6 ft/lbs



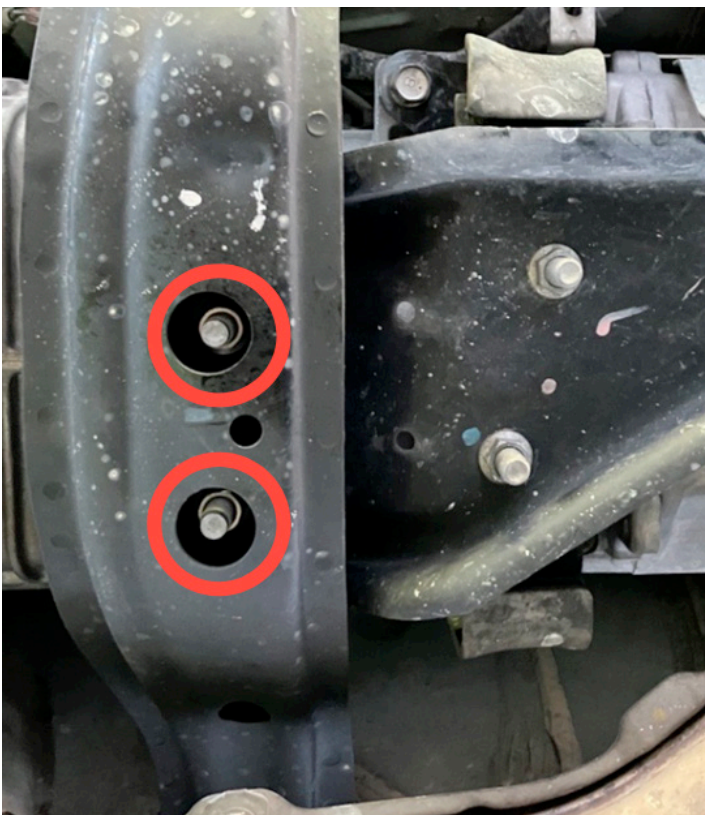
STEP 10 - Ensure that the front cross member stud bushings are seated properly in the transmission bracket. Install the isolator, and the front cross member to the transmission bracket. Only hand tighten these nuts for now.



STEP 11 - Using your floor jack or pole jack, raise the transmission under the front cross member at the nuts that we just installed so that the 17mm cross member bolts can be installed fully. This ensures that we are not using the bolt to raise the transmission and possibly damaging the body threads. Torque to 103.3 ft/lbs.



STEP 12 - Finally, torque the nuts securing the transmission cradle to the front cross member to 51.6 ft/lbs. Once these are tightened, you can lower your vehicle down and take it for a test drive!





1400 Randall Ct, Unit 104
Export, PA 15632
612-379-0000
support@grimmspeed.com

www.grimmspeed.com

Follow us!
@grimmspeed

