



INSTALLATION GUIDE

Part Number GRM113095BLK/RED

Last Updated 08/21/2024

GRIMMSPEED 2022+ WRX FENDER SHROUDS INSTALLATION GUIDE



FITMENTS:

- 2022+ Subaru WRX

TOOLS NEEDED:

- Flat Head Screwdriver or
- Plastic Clip Removal Tool
- 4mm Allen Key
- 2.5mm Allen Key
- 10mm Wrench

THINGS TO NOTE:

- This is a fairly basic installation and should only take 10-15 minutes to complete
- Be sure to follow recommended torque specs during the install.
- No ECU tuning or re-calibration is required after installation.

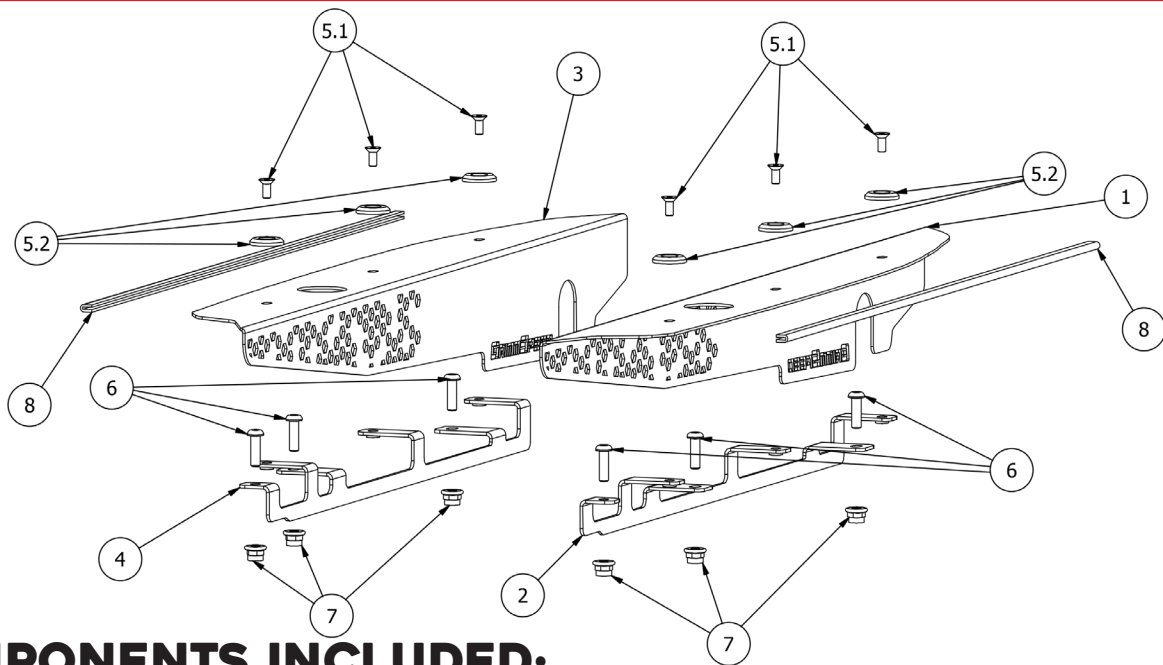
PRODUCT DISCLAIMER:

United States 48 State Compliant:

California/New York Residents please see Prop 65.

This is a Race Only product that is to be used solely for competition, it cannot be used on vehicles that are operated on public streets, roads or highways. Its use is limited to closed-course and open-course racing that is formally sanctioned by a recognized racing organization. Any other use including recreational use could be in violation of local, state and federal laws.

GrimmSpeed is not responsible for any vehicle damage or personal injury that may occur due to an installation error, product misuse, or removal of GrimmSpeed products. GrimmSpeed highly suggests that a trained professional conduct the installation on all products. GrimmSpeed is not responsible for damaged products due to incorrect installation.



COMPONENTS INCLUDED:

Item	Quantity	Part Number	Description
1	1	GS-113091BLK/RED	GrimmSpeed VB Fender Shroud - Left
2	1	GS-113092	GrimmSpeed VB Fender Shroud Mounting Bracket Left
3	1	GS-113093BLK/RED	GrimmSpeed VB Fender Shroud - Right
4	1	GS-113094	GrimmSpeed VB Fender Shroud Mounting Bracket Right
5.1	6	GS-113097A	M5x0.8 Flat-Head Screw
5.2	6	GS-113097B	GrimmSpeed M5 Dress-Up Washer
6	6	B03033	M6x1.0-20mm Button Head Cap Screw - Stainless Steel
7	6	N24034	M6x1.0 Nylock Flange Nut - Clear Zinc Plated
8	2	GS-113098	1/16"x1/4" Rubber Edge Trim 22" LG

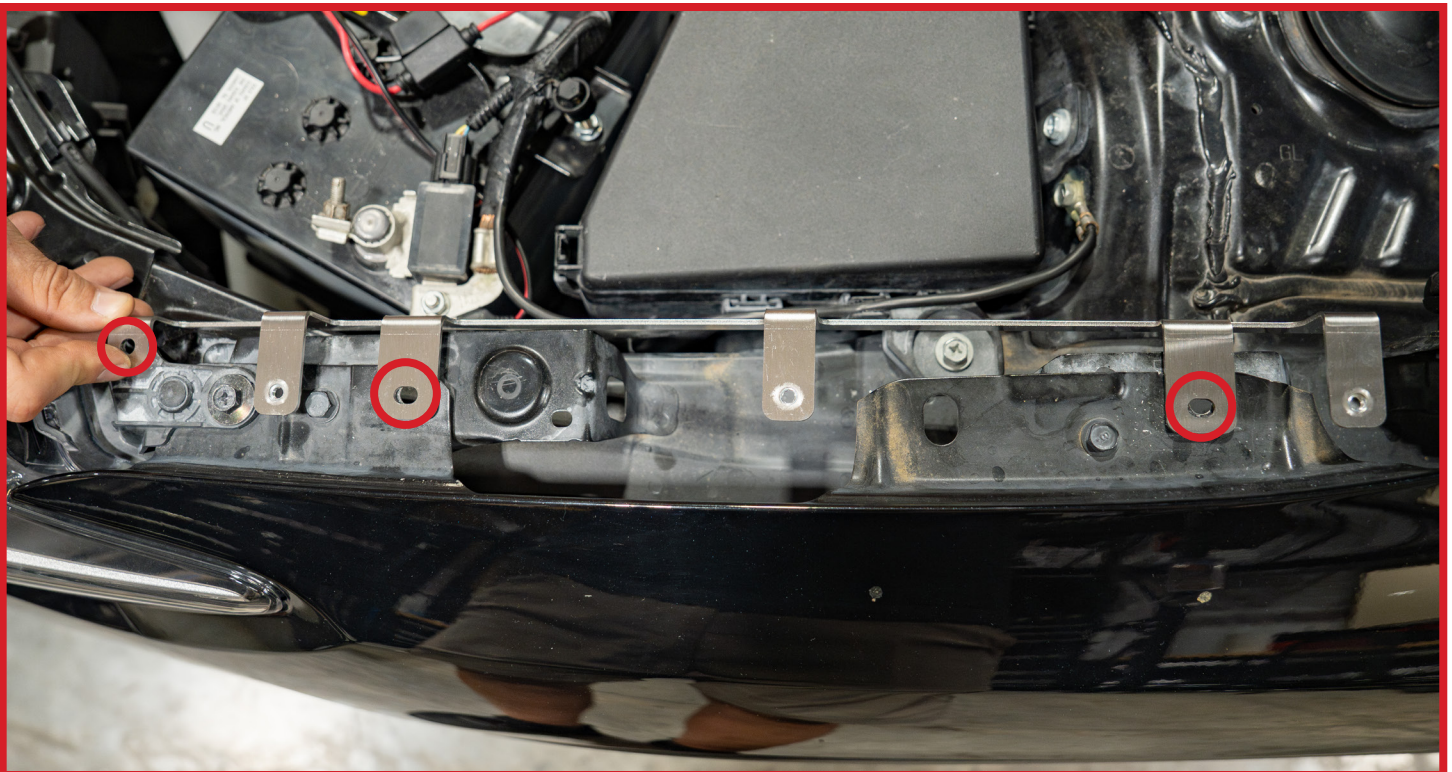
BEFORE YOU BEGIN:

Turn off the ignition. Loosen battery terminal and disconnect the negative battery terminal cable. Allow the vehicle to sit for a minimum of 5 minutes to drain any remaining charge from the charging system.

- 1 Remove the 3 plastic pop clips that retain the factory fender cover using a flat head screwdriver or a plastic clip removal tool. Once the clips are out, you can remove the OEM cover from the engine bay. Repeat these steps to remove the factory fender cover from the other side of the engine bay as well.



- 2 Starting on the left side of the car, you can grab on of the GrimmSpeed Fender Shroud Mounting Bracket that is included in your kit. Keep in mind that these are mirrored from left to right, so make sure you have the right one. Line up the 3 non-threaded mounting holes in the mounting bracket with the 3 holes in the fender that the factory cover was clipped to as shown below.



- 3** Grab 3 of the M6x20mm bolts included in the hardware kit as well as 3 of the matching nylock nuts. Begin securing the Mounting Bracket to the fender through the factory holes with the button head bolt feeding down from the top and the nut underneath. Start all of the bolts by hand before fully tightening any of them.



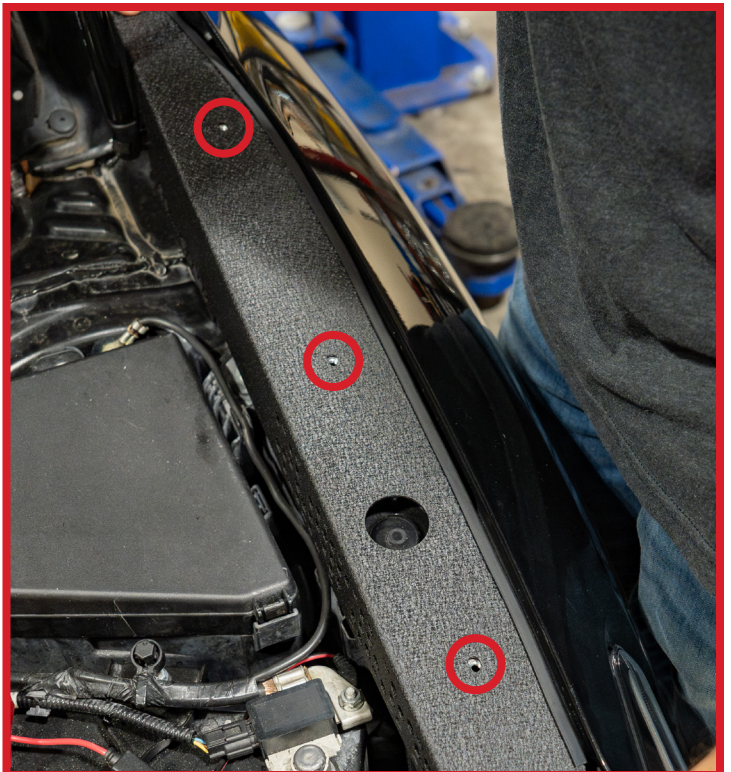
- 4** Once all three of the Mounting Bracket bolts are loosely in place, go back and fully tighten them with a 4mm allen key and a 10mm wrench underneath. Torque these bolts to 12 ft/lbs.



- 5** Add one of the included strips of rubber trim to the outside-top edge of your Fender Shroud. This is to prevent the shroud from rattling against the body of the car.



- 6** Set your Fender Shroud into the engine bay. Ensure that the notch in the lower inside edge goes around the lower hood strut bracket. Once in place, the three holes in the Fender Shroud should line up with the three threaded inserts in the Mounting Bracket below.



- 7** Secure the Fender Shroud to the Mounting Bracket using three of the included M5 flat-head bolts and the GrimmSpeed Dress-Up Washers that match them. Once all three bolts are started, torque them to 4.5 ft/lbs.



- 8** Repeat steps 2-7 for the other side of the vehicle and you are all good to go. Enjoy the upgraded aesthetics of your engine bay.





1400 Randall Ct, Unit 104
Export, PA 15632
612-379-0000
support@grimmspeed.com

www.grimmspeed.com

Follow us!
@grimmspeed

