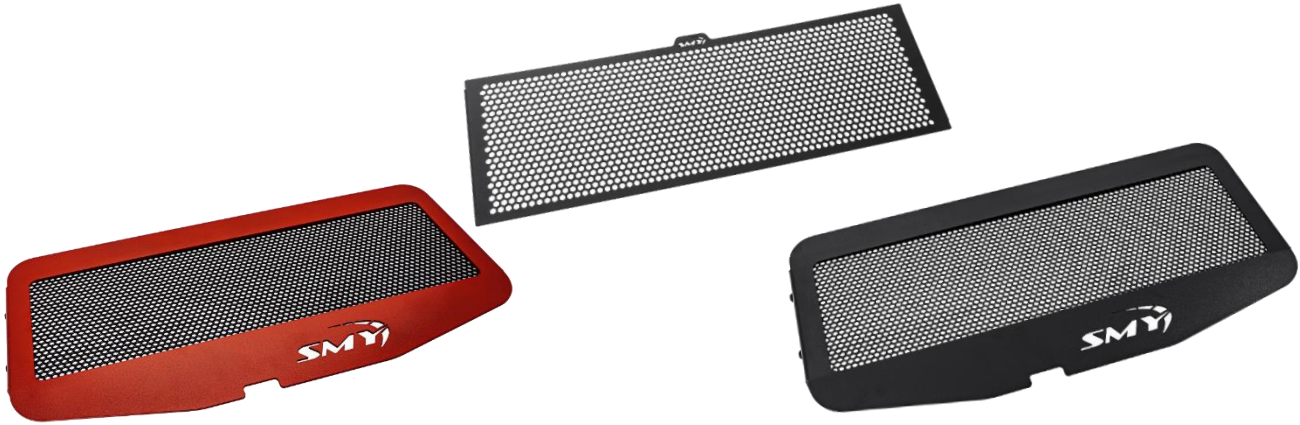




Intercooler Mesh Installation Guide



Installation Time = 5-10 Minutes

Tools Required:

Allen Key = 

Hands =



Package Contents:

1 x Intercooler Mesh =



4 x Screws w/ Allen Key Head =



1 x Driver Side Bracket =



4 x Black Hinged Screw Caps =



1 x Passenger Side Bracket =



1 x Thread Lock Packet =



2 x Strips of 3M Tape (ONLY pre-installed on SMY-INTM-VB Brackets)

Step #1

For Intercooler Mesh Covers SMY-INTCV-VBRD & SMY-INTCV-VBBK the brackets are installed on the bracket prior to shipping and on the correct side. Please remove the brackets from the mesh by removing the screws. The washers are not supposed to be used when installed. SMY-INTM-VB is sent with the brackets separated and marked with location.

Step #2

Clean any debris from the top of the intercooler. If necessary, but be careful fix any bent fins using either one of these tools.

- Thin Flat head screw driver
- Tooth Pick
- Tweezers
- Etc...

Step #3

Bracket installation. For the Red or Black Intercooler Mesh kits with the Frames the 3M tape must be installed onto the brackets prior to installation (see 1st Picture below.) The 3M tape will hold the brackets onto the underside of the intercooler side fins (2nd picture below)



Step #4

For part# **SMY-INTM-VB** place Mesh over intercooler with the SMY Logo on top and line up the holes on the mesh with the bracket holes.

For Part#s **SMY-INTCV-VBBK & SMY-INTCV-VBRD** place the mesh and the frame together over the intercooler with the SMY logo that is on the frame on the bottom. Line up the holes on the mesh with the bracket holes.



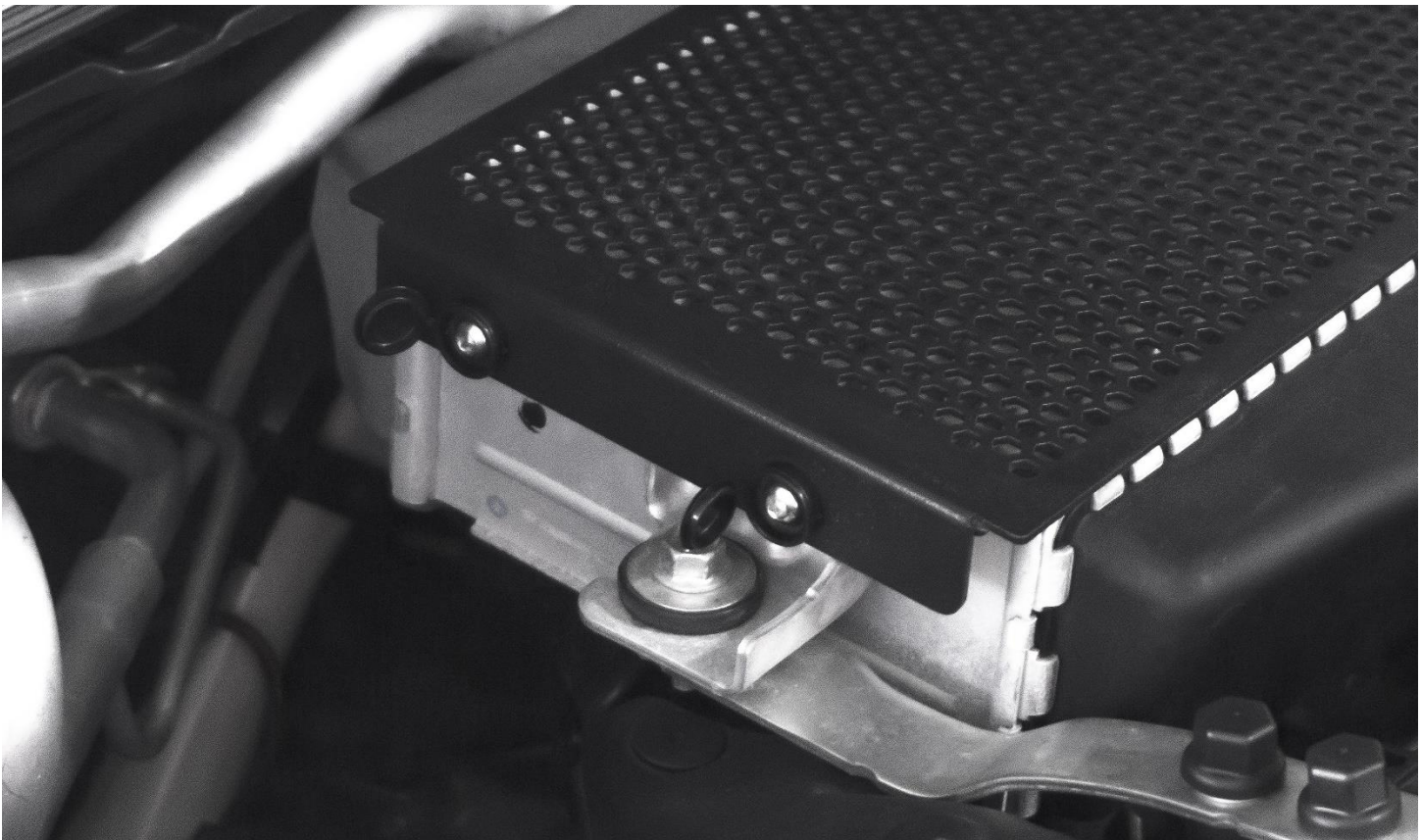
Step #5

For this step you will need the Allen Key, 4 x Screws, 4 x Black Hinged Screw Caps and the package of thread lock. Place the screws into the holes of the hinged caps where the head is on the cap side. Cut open the threadlocker packet and put a small dab on threads of each of the screws.



Step #6

Install each screw and ONLY hand tighten, while pressing the mesh ends down on the side you are working on. DO NOT over tighten, this is not needed and will cause the caps to warp.



Step #7

Using your FINGERS gently shut the caps.



INSTALLATION COMPLETED – CONGRATS ON A GREAT JOB WELL DONE