



V2 & V3 Rear Brake Light / 3rd Brake Light Installation Manual


Installation Time = 15-25 Minutes

Tools Required:

Phillips Head Screw Driver = 


Panel Popper = 

10mm Socket Wrench = 

Razor or Knife = 


Package Contents: (2015-2019 WRX & STI)

1 x Light = 

1 x Wiring Harness = 

1 x Bracket = 

3 x Brass Screws w/ 10mm Head = 


1 x Black J-Nut = 


1 x Black Plastic Push Clip = 

3 x Zip Ties = 

Package Contents: (2011-2014 WRX & STI Sedan)

1 x Light = 

1 x Wiring Harness = 

2 x Brass Screws w/ 10mm Head = 

3 x Zip Ties = 

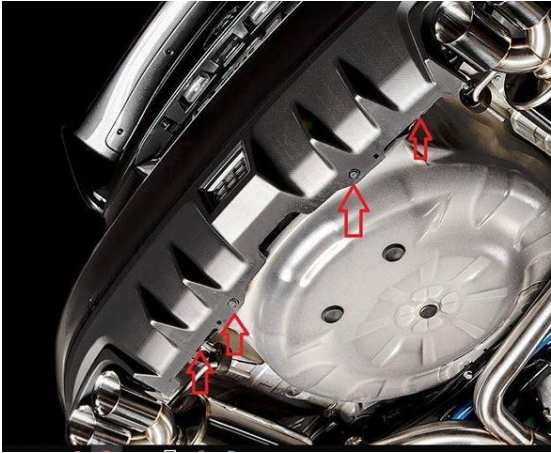
Changing Light Functions:

While holding the brake pedal down, toggle your headlight switch from OFF to DRL 3 times within 5 seconds. The function will be stored within the lights memory until you change it.



Step #1

From under the rear of the car remove the 4 black push clips as noted in the picture below using a panel popper.



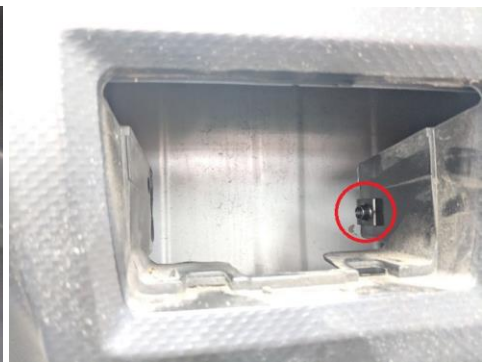
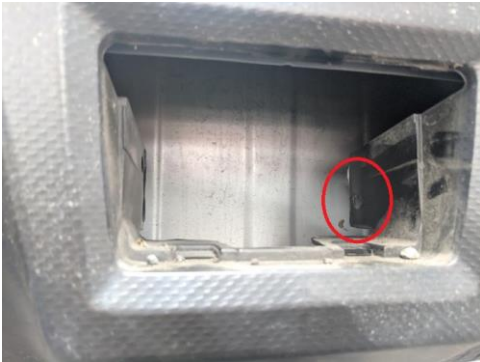
Step #2

Push the rectangular cover from the inside outwards there are two clips on top and bottom. You can just push really hard with a screw driver or panel popper if needed from the underside of the bumper.



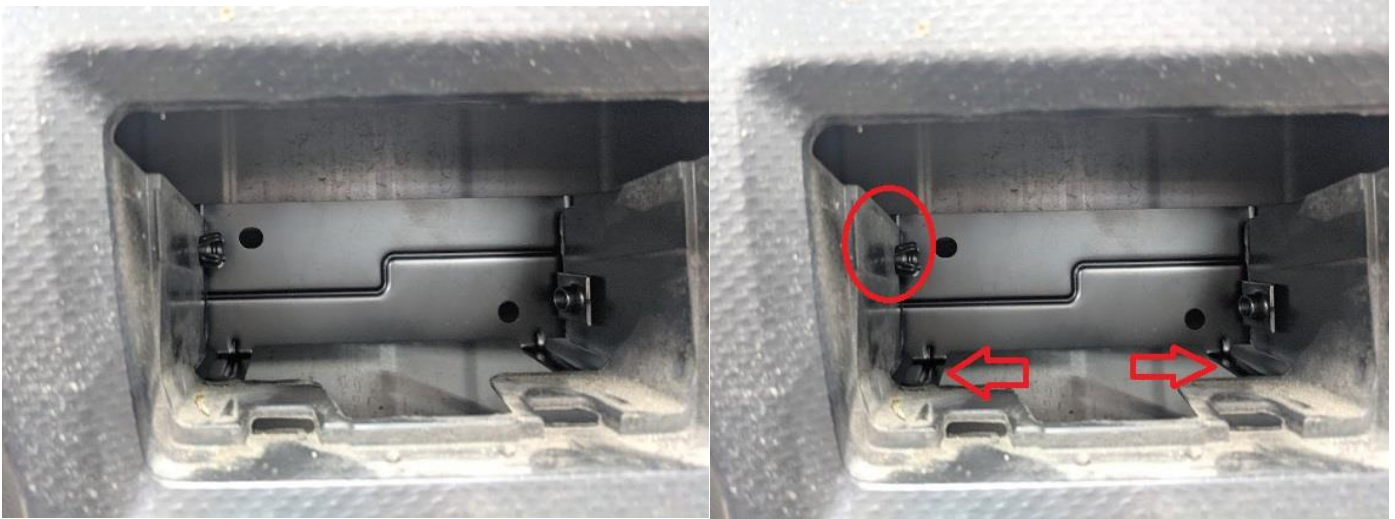
Step #3

Find black J-NUT. From the outside of the car looking through the hole where the cap was covering you will see a hole on the passenger side. Insert the J-Nut with the threaded side facing the inside of the hole as shown in the photo below. Please note the 2nd photo showing a slot for the J-Nut. There is a slot / cut out for the J-Nut to slide into, make sure the J-Nut is installed as shown in the photos.



Step #4

Find the black bracket and plastic push clip. Install the bracket from under the car with the prongs facing down and the bracket going on the outside of the plastic cubby, on both sides. So the pass side of the bracket is sitting on the outside of the j-nut and the other on the outside as well. Then install black push clip into the driver side hole.



Step #5

For this step you will need the Light and 3 brass screws. Grab light and insert from the outside, make sure to leave the protective film on. Slide the light in from the outside all the way in until the back of the light is close or touching the bracket you previously installed. Take 2 of the 3 screws and by hand insert the screws into the two holes in the backside of the bracket. Hand tighten ONLY. Once those are in as much as they can go by hand. Install the pass side screw into the other hole of the bracket into the J-Nut installed previously in step #3. Tighten that by hand and then by using a 10mm ratchet or screw driver. This screw in the J-Nut should be tightened very well. Once that is done you can finish tightening the first 2 screws using a 10mm ratchet. **MAKE SURE THE HARNESS IS STICKING UPWARDS & NOT CRIMPED.**



Step #6

From inside the trunk you will see one push clip right behind the tail light, remove that push clip using your panel popper.



Step #7

Next we will remove the center panel trim from the trunk. There are 3 more push clips that need to be removed with a panel popper as well. Once the three push clips are removed you will need to grab the trim and pull straight up firmly. It will only come out if pulled straight up. There are no screws or other push clips holding in place besides the 3 that were removed.



Step #8

Under that plastic trim you will find on the backside one rubber grommet on the drive side and one plastic one on the passenger side. This is the one you want to run the wiring through. Using a knife cut a small X into the center of the plastic grommet and feed the white plug from the wiring harness in through there. You need to feed about 14 inches the rest stays in the trunk.



Step #9

Behind the taillight where you removed the push clip in step #6 peel the grey carpet back and unplug the harness connected to the tail light. Once you have unplugged the tail light harness plug it back into the provided wiring harness in this kit. Then plug the other end of the wiring harness into the tail light. Using the provided zip ties you can bundle up the remaining wiring and zip tie as shown.



Step #10

From under the car please find the wiring harness you fed through the plastic grommet in step #8 and plug it into the light. This will complete the installation of the light. Please test all functions before closing up the panels you removed.

